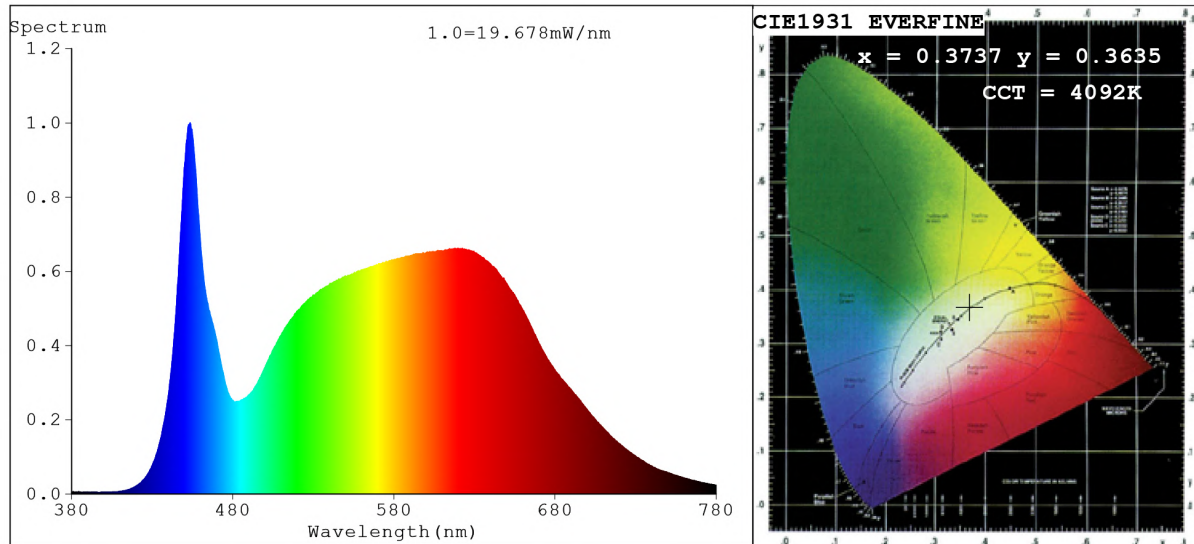


## Spectrum Test Report



### Color Parameters:

Chromaticity Coordinate:  $x=0.3737$   $y=0.3635$   $u'=0.2260$   $v'=0.4946$   
 CCT=4092K (Duv=-0.0043) Dominant WL:Ld =581.7nm Purity=21.2%  
 Ratio:R=19.7% G=76.2% B=4.2%; Peak WL:Lp=453.6nm FWHM=20.4nm  
 Render Index:Ra=92.8 CRI=89.4 TM30:Rf=88 Rg=101  
 R1 =94 R2 =96 R3 =94 R4 =92 R5 =92 R6 =91 R7 =94  
 R8 =89 R9 =73 R10=87 R11=91 R12=67 R13=95 R14=96 R15=94

### Photo Parameters:

Flux = 816.2 lm Eff. : 68.72 lm/W Fe = 2.852 W Scotopic:1472.9 S/P:1.8046

### Electrical parameters:

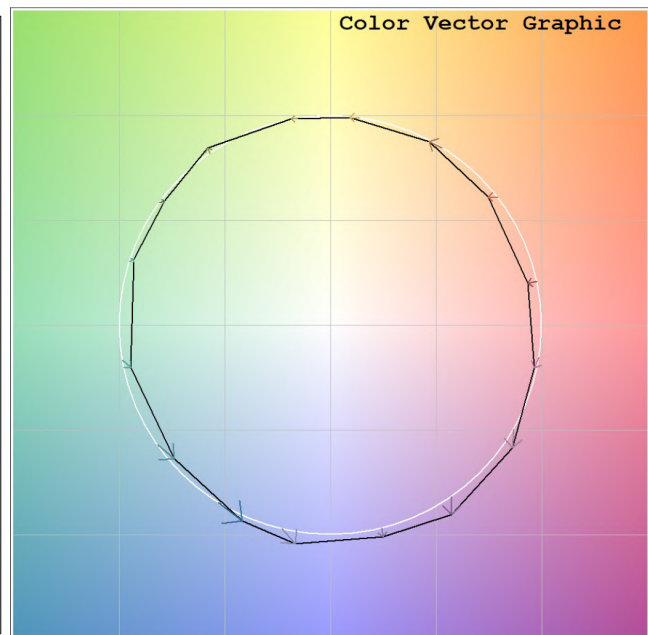
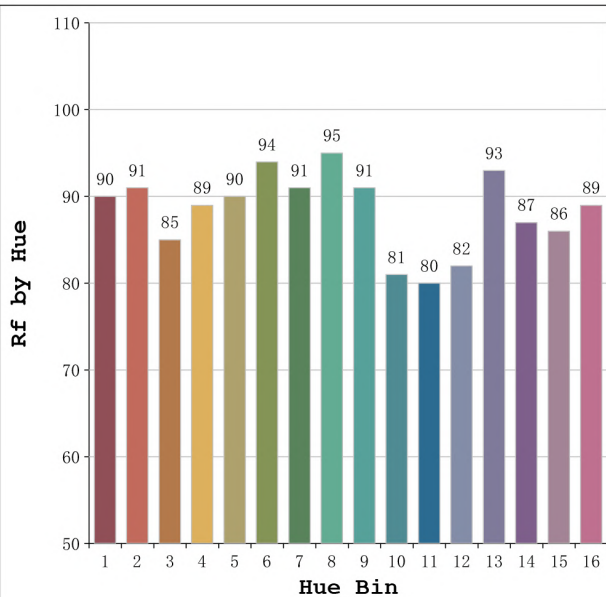
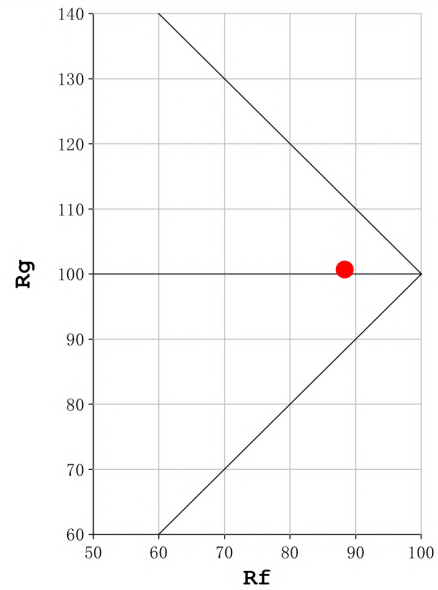
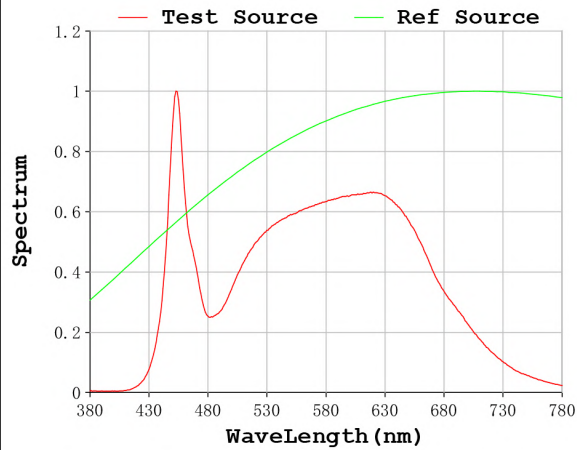
V = 23.998 V I = 0.4949 A P = 11.88 W PF = 1.000

Status: Integral T = 2000 ms Ip = 53286 (81%)

Model:Ecoled Cairo 4000K  
 Tester:Sergio Carneros  
 Temperature:27Deg  
 Manufacturer:Luz Negra S.L

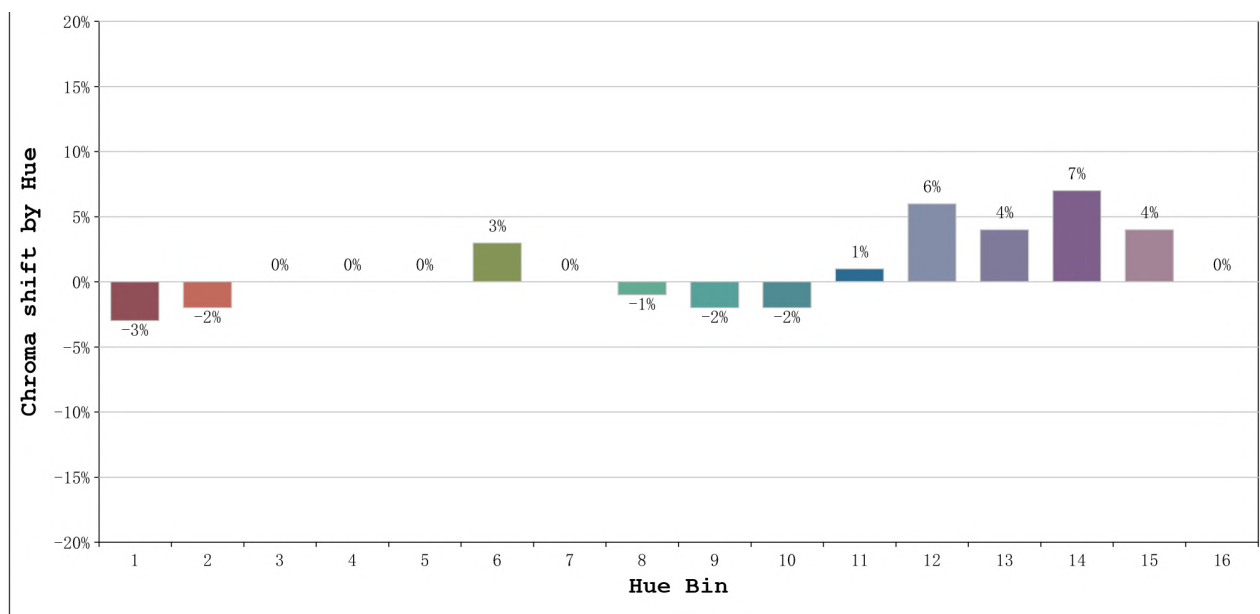
Number: 10.241  
 Date:2023-11-17 12:30:34  
 Humidity:40%  
 Remarks:100cm de néon

**Rf: 88**      **CCT: 4092 K**      **u': 0.2260**  
**Rg: 101**      **Duv: -0.0043**      **v': 0.4946**



Model:Ecoled Cairo 4000K  
 Tester:Sergio Carneros  
 Temperature:27Deg  
 Manufacturer:Luz Negra S.L

Number: 10.241  
 Date:2023-11-17 12:30:34  
 Humidity:40%  
 Remarks:100cm de néon



			Graphic shift(%)	
Hue Bin	Hue Angle	Rf	Chroma	Hue
1	0.0° - 22.5°	90	-3	0
2	22.5° - 45.0°	91	-2	3
3	45.0° - 67.5°	85	0	7
4	67.5° - 90.0°	89	0	4
5	90.0° - 112.5°	90	0	3
6	112.5° - 135.0°	94	3	0
7	135.0° - 157.5°	91	0	-1
8	157.5° - 180.0°	95	-1	-1
9	180.0° - 202.5°	91	-2	4
10	202.5° - 225.0°	81	-2	10
11	225.0° - 247.5°	80	1	14
12	247.5° - 270.0°	82	6	8
13	270.0° - 292.5°	93	4	0
14	292.5° - 315.0°	87	7	-3
15	315.0° - 337.5°	86	4	-7
16	337.5° - 360.0°	89	0	-4

Model:Ecoled Cairo 4000K  
 Tester:Sergio Carneros  
 Temperature:27Deg  
 Manufacturer:Luz Negra S.L

Number: 10.241  
 Date:2023-11-17 12:30:34  
 Humidity:40%  
 Remarks:100cm de néon